



Philips GreenPerform Waterproof G3: A high-performance, energy-efficient waterproof batten

GreenPerform Waterproof G3

GreenPerform Waterproof G3 is a superb choice for hard-working applications. Not only does it provide excellent optical performance, it also delivers substantial energy saving. And because it works seamlessly with IoT software like Interact, it also offers the option of customization, convenience, and data-driven insights.

Benefits

- Suit your applications with choice of two superior optics
- Excellent energy savings
- Data-driven insights via
- Interact software and platforms

Features

- Injection molding Polycarbonate Cover Opal (PCO) and Wide Beam (WB) optics
- Up to 140lm/W
- IP65/IK08
- 50,000 hours L70 B50 @ 35°C
- Works with Interact IoT software and platform

GreenPerform Waterproof G3

Application

- Parking Garages
- Manufacturing
- Warehouses

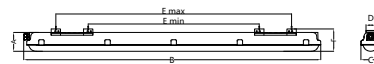
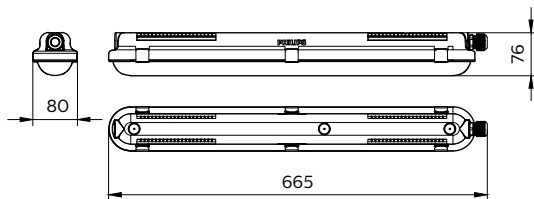
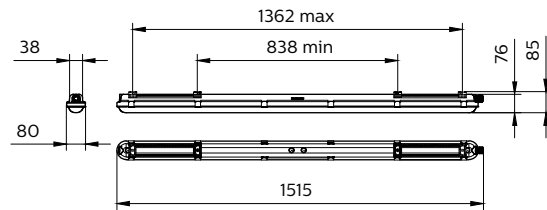
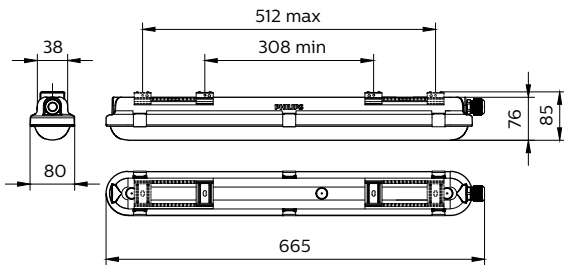
Versions



GreenPerform Waterproof EcoSet L600

WT198X L1200 L1200

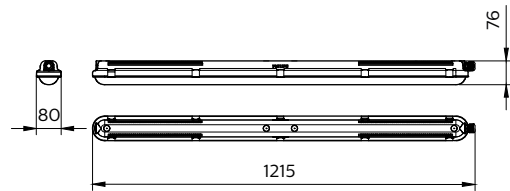
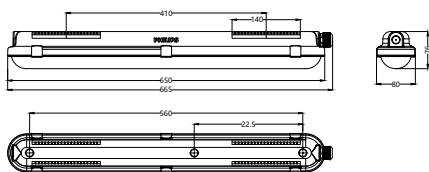
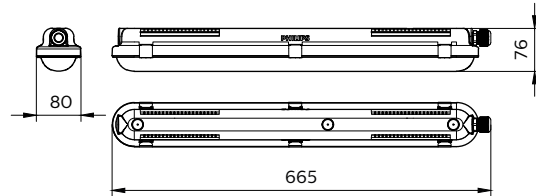
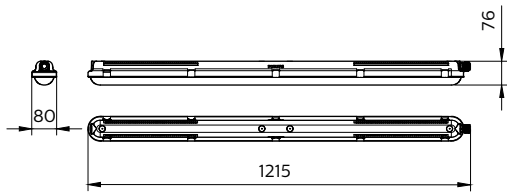
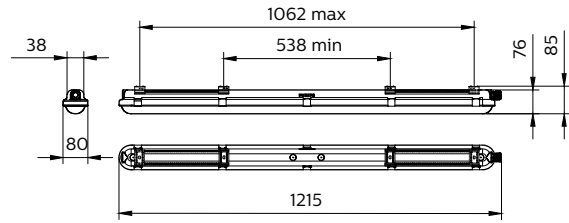
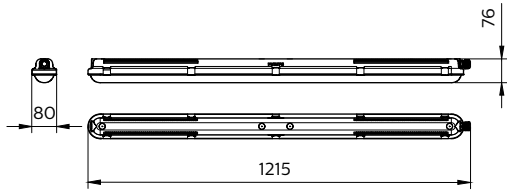
Dimensional drawing



| Type | Dimension (mm) | | | | | | Nr. Of Clips |
|-------|----------------|------|----|----|-------|-------|--------------|
| | A | B | C | D | E min | E max | |
| L600 | 665 | | | 38 | 312 | | 6 |
| L1200 | 76 | 1215 | 80 | 38 | 538 | 1062 | 10 |
| L1500 | | 1515 | | | 838 | 1362 | 12 |

GreenPerform Waterproof G3

Dimensional drawing



GreenPerform Waterproof G3

| Light Technical | |
|------------------------------|----------------|
| Color rendering index (CRI) | >80 |
| Optic type | - |
| Mechanical and Housing | |
| Housing Color | Gray |
| Approval and Application | |
| CE mark | CE mark |
| Protection class IEC | Safety class I |
| ENEC mark | - |
| Mech. impact protection code | IK08 |

General Information

| Order Code | Full Product Name | Driver included | Light source replaceable | Number of gear units |
|--------------|--------------------------------|-----------------|--------------------------|----------------------|
| 911401514342 | WT198C LED10S/840 PSU L600 | Yes | - | - |
| 911401514442 | WT198C LED10S/840 PSU PCO L600 | Yes | - | - |
| 911401551502 | WT198X LED20S/840 L1 W L600 | - | - | - |
| 911401551602 | WT198X LED27S/840 L1 W L1200 | - | - | - |
| 911401551702 | WT198X LED40S/840 L1 W L1200 | - | - | - |
| 911401551802 | WT198X LED60S/840 L1 W L1500 | - | - | - |
| 911401551902 | WT198X LED82S/840 L1 W L1500 | - | - | - |
| 911401552002 | WT198X LED20S/865 L1 W L600 | - | - | - |
| 911401552102 | WT198X LED27S/865 L1 W L1200 | - | - | - |
| 911401552202 | WT198X LED40S/865 L1 W L1200 | - | - | - |
| 911401552302 | WT198X LED60S/865 L1 W L1500 | - | - | - |
| 911401552402 | WT198X LED82S/865 L1 W L1500 | - | - | - |
| 911401571091 | WT198X LED20S/840 L1 S L600 | - | - | - |
| 911401571391 | WT198X LED60S/840 L1 S L1500 | - | - | - |
| 911401571491 | WT198X LED82S/840 L1 S L1500 | - | - | - |
| 911401571591 | WT198X LED20S/865 L1 S L600 | - | - | - |
| 911401571891 | WT198X LED60S/865 L1 S L1500 | - | - | - |
| 911401571991 | WT198X LED82S/865 L1 S L1500 | - | - | - |

| Order Code | Full Product Name | Driver included | Light source replaceable | Number of gear units |
|--------------|----------------------------------|-----------------|--------------------------|----------------------|
| 911401552502 | WT198X LED19S/840 L1 W PCO L600 | - | - | - |
| 911401552602 | WT198X LED26S/840 L1 W PCO L1200 | - | - | - |
| 911401552702 | WT198X LED38S/840 L1 W PCO L1200 | - | - | - |
| 911401552802 | WT198X LED57S/840 L1 W PCO L1500 | - | - | - |
| 911401552902 | WT198X LED77S/840 L1 W PCO L1500 | - | - | - |
| 911401553002 | WT198X LED19S/865 L1 W PCO L600 | - | - | - |
| 911401553102 | WT198X LED26S/865 L1 W PCO L1200 | - | - | - |
| 911401553202 | WT198X LED38S/865 L1 W PCO L1200 | - | - | - |
| 911401553302 | WT198X LED57S/865 L1 W PCO L1500 | - | - | - |
| 911401553402 | WT198X LED77S/865 L1 W PCO L1500 | - | - | - |
| 911401572091 | WT198X LED19S/840 L1 S PCO L600 | - | - | - |
| 911401572391 | WT198X LED57S/840 L1 S PCO L1500 | - | - | - |
| 911401572491 | WT198X LED77S/840 L1 S PCO L1500 | - | - | - |
| 911401572591 | WT198X LED19S/865 L1 S PCO L600 | - | - | - |
| 911401572891 | WT198X LED57S/865 L1 S PCO L1500 | - | - | - |
| 911401572991 | WT198X LED77S/865 L1 S PCO L1500 | - | - | - |
| 911401549981 | WT198X LED20S/840 WIA L600 | - | - | - |
| 911401571191 | WT198X LED27S/840 L1 S L1200 | - | - | - |

GreenPerform Waterproof G3

| Order Code | Full Product Name | Driver included | Light source replaceable | Number of gear units | Order Code | Full Product Name | Driver included | Light source replaceable | Number of gear units |
|--------------|----------------------------------|-----------------|--------------------------|----------------------|--------------|---------------------------------|-----------------|--------------------------|----------------------|
| 911401571291 | WT198X LED40S/840 L1 S L1200 | - | - | - | 911401562961 | WT198C LED60S/840 PSD L1500 | Yes | No | 1 unit |
| 911401571691 | WT198X LED27S/865 L1 S L1200 | - | - | - | 911401563061 | WT198C LED80S/840 PSD L1500 | Yes | No | 1 unit |
| 911401571791 | WT198X LED40S/865 L1 S L1200 | - | - | - | 911401825580 | WT198C LED19S/840 PSU L600 | Yes | No | 1 unit |
| 911401572191 | WT198X LED26S/840 L1 S PCO L1200 | - | - | - | 911401825680 | WT198C LED27S/840 PSU L1200 | Yes | No | 1 unit |
| 911401572291 | WT198X LED38S/840 L1 S PCO L1200 | - | - | - | 911401825780 | WT198C LED40S/840 PSU L1200 | Yes | No | 1 unit |
| 911401572691 | WT198X LED26S/865 L1 S PCO L1200 | - | - | - | 911401825880 | WT198C LED60S/840 PSU L1500 | Yes | No | 1 unit |
| 911401572791 | WT198X LED38S/865 L1 S PCO L1200 | - | - | - | 911401825980 | WT198C LED80S/840 PSU L1500 | Yes | No | 1 unit |
| 911401550281 | WT198X LED60S/840 WIA L1500 | - | - | - | 911401826080 | WT198C LED18S/840 PSU PCO L600 | Yes | No | 1 unit |
| 911401550381 | WT198X LED82S/840 WIA L1500 | - | - | - | 911401826180 | WT198C LED25S/840 PSU PCO L1200 | Yes | No | 1 unit |
| 911401552261 | WT198C LED40S/840 PSU L1200 CL | Yes | No | 1 unit | 911401826380 | WT198C LED37S/840 PSU PCO L1200 | Yes | No | 1 unit |
| 911401552361 | WT198C LED60S/840 PSU L1500 CL | Yes | No | 1 unit | 911401826480 | WT198C LED57S/840 PSU PCO L1500 | Yes | No | 1 unit |
| 911401552461 | WT198C LED19S/840 PSU L600 CL | Yes | No | 1 unit | 911401826580 | WT198C LED75S/840 PSU PCO L1500 | Yes | No | 1 unit |
| 911401562761 | WT198C LED27S/840 PSD L1200 | Yes | No | 1 unit | 911401550081 | WT198X LED28S/840 WIA L1200 | - | - | - |
| 911401562861 | WT198C LED40S/840 PSD L1200 | Yes | No | 1 unit | 911401550181 | WT198X LED40S/840 WIA L1200 | - | - | - |

Light Technical

| Order Code | Full Product Name | Beam angle of light source | Correlated Color Temperature (Nom) | Optical cover/lens type | Luminous Efficacy (rated) (Nom) | Luminous Flux |
|--------------|--------------------------------|----------------------------|------------------------------------|----------------------------------|---------------------------------|---------------|
| 911401514342 | WT198C LED10S/840 PSU L600 | - | 4000 K | Polycarbonate bowl/cover frosted | 130 lm/W | 1,000 lumen |
| 911401514442 | WT198C LED10S/840 PSU PCO L600 | - | 4000 K | Polycarbonate bowl/cover opal | 120 lm/W | 1,000 lumen |
| 911401551502 | WT198X LED20S/840 L1 W L600 | - | 4000 K | - | 140 lm/W | 2,000 lumen |
| 911401551602 | WT198X LED27S/840 L1 W L1200 | - | 4000 K | - | 140 lm/W | 2,700 lumen |
| 911401551702 | WT198X LED40S/840 L1 W L1200 | - | 4000 K | - | 140 lm/W | 4,000 lumen |
| 911401551802 | WT198X LED60S/840 L1 W L1500 | - | 4000 K | - | 140 lm/W | 6,000 lumen |
| 911401551902 | WT198X LED82S/840 L1 W L1500 | - | 4000 K | - | 140 lm/W | 8,200 lumen |
| 911401552002 | WT198X LED20S/865 L1 W L600 | - | 6500 K | - | 140 lm/W | 2,000 lumen |
| 911401552102 | WT198X LED27S/865 L1 W L1200 | - | 6500 K | - | 140 lm/W | 2,700 lumen |
| 911401552202 | WT198X LED40S/865 L1 W L1200 | - | 6500 K | - | 140 lm/W | 4,000 lumen |
| 911401552302 | WT198X LED60S/865 L1 W L1500 | - | 6500 K | - | 140 lm/W | 6,000 lumen |
| 911401552402 | WT198X LED82S/865 L1 W L1500 | - | 6500 K | - | 140 lm/W | 8,200 lumen |
| 911401571091 | WT198X LED20S/840 L1 S L600 | - | 4000 K | - | 140 lm/W | 2,000 lumen |
| 911401571391 | WT198X LED60S/840 L1 S L1500 | - | 4000 K | - | 140 lm/W | 6,000 lumen |
| 911401571491 | WT198X LED82S/840 L1 S L1500 | - | 4000 K | - | 140 lm/W | 8,200 lumen |
| 911401571591 | WT198X LED20S/865 L1 S L600 | - | 6500 K | - | 140 lm/W | 2,000 lumen |

GreenPerform Waterproof G3

| Order Code | Full Product Name | Beam angle of light source | Correlated Color | | Luminous Efficacy (rated) | |
|--------------|----------------------------------|----------------------------|-------------------|--------------------------------|---------------------------|---------------|
| | | | Temperature (Nom) | Optical cover/lens type | (Nom) | Luminous Flux |
| 911401571891 | WT198X LED60S/865 L1 S L1500 | - | 6500 K | - | 140 lm/W | 6,000 lumen |
| 911401571991 | WT198X LED82S/865 L1 S L1500 | - | 6500 K | - | 140 lm/W | 8,200 lumen |
| 911401552502 | WT198X LED19S/840 L1 W PCO L600 | - | 4000 K | - | 130 lm/W | 1,900 lumen |
| 911401552602 | WT198X LED26S/840 L1 W PCO L1200 | - | 4000 K | - | 130 lm/W | 2,600 lumen |
| 911401552702 | WT198X LED38S/840 L1 W PCO L1200 | - | 4000 K | - | 130 lm/W | 3,800 lumen |
| 911401552802 | WT198X LED57S/840 L1 W PCO L1500 | - | 4000 K | - | 130 lm/W | 5,700 lumen |
| 911401552902 | WT198X LED77S/840 L1 W PCO L1500 | - | 4000 K | - | 130 lm/W | 7,700 lumen |
| 911401553002 | WT198X LED19S/865 L1 W PCO L600 | - | 6500 K | - | 130 lm/W | 1,900 lumen |
| 911401553102 | WT198X LED26S/865 L1 W PCO L1200 | - | 6500 K | - | 130 lm/W | 2,600 lumen |
| 911401553202 | WT198X LED38S/865 L1 W PCO L1200 | - | 6500 K | - | 130 lm/W | 3,800 lumen |
| 911401553302 | WT198X LED57S/865 L1 W PCO L1500 | - | 6500 K | - | 130 lm/W | 5,700 lumen |
| 911401553402 | WT198X LED77S/865 L1 W PCO L1500 | - | 6500 K | - | 130 lm/W | 7,700 lumen |
| 911401572091 | WT198X LED19S/840 L1 S PCO L600 | - | 4000 K | - | 130 lm/W | 2,000 lumen |
| 911401572391 | WT198X LED57S/840 L1 S PCO L1500 | - | 4000 K | - | 130 lm/W | 6,000 lumen |
| 911401572491 | WT198X LED77S/840 L1 S PCO L1500 | - | 4000 K | - | 130 lm/W | 8,200 lumen |
| 911401572591 | WT198X LED19S/865 L1 S PCO L600 | - | 6500 K | - | 130 lm/W | 2,000 lumen |
| 911401572891 | WT198X LED57S/865 L1 S PCO L1500 | - | 6500 K | - | 130 lm/W | 6,000 lumen |
| 911401572991 | WT198X LED77S/865 L1 S PCO L1500 | - | 6500 K | - | 130 lm/W | 8,200 lumen |
| 911401549981 | WT198X LED20S/840 WIA L600 | - | 4000 K | Acrylic bowl/cover frosted | 125 lm/W | 2,000 lumen |
| 911401571191 | WT198X LED27S/840 L1 S L1200 | - | 4000 K | Polycarbonate bowl/cover foggy | 133 lm/W | 2,700 lumen |
| 911401571291 | WT198X LED40S/840 L1 S L1200 | - | 4000 K | Polycarbonate bowl/cover foggy | 139 lm/W | 4,000 lumen |
| 911401571691 | WT198X LED27S/865 L1 S L1200 | - | 6500 K | Polycarbonate bowl/cover foggy | 133 lm/W | 2,700 lumen |
| 911401571791 | WT198X LED40S/865 L1 S L1200 | - | 6500 K | Polycarbonate bowl/cover foggy | 139 lm/W | 4,000 lumen |
| 911401572191 | WT198X LED26S/840 L1 S PCO L1200 | - | 4000 K | Polycarbonate bowl/cover foggy | 133 lm/W | 2,600 lumen |
| 911401572291 | WT198X LED38S/840 L1 S PCO L1200 | - | 4000 K | Polycarbonate bowl/cover foggy | 139 lm/W | 3,800 lumen |
| 911401572691 | WT198X LED26S/865 L1 S PCO L1200 | - | 6500 K | Polycarbonate bowl/cover foggy | 133 lm/W | 2,600 lumen |
| 911401572791 | WT198X LED38S/865 L1 S PCO L1200 | - | 6500 K | Polycarbonate bowl/cover foggy | 139 lm/W | 3,800 lumen |
| 911401550281 | WT198X LED60S/840 WIA L1500 | - | 4000 K | Acrylic bowl/cover frosted | 133 lm/W | 6,000 lumen |
| 911401550381 | WT198X LED82S/840 WIA L1500 | - | 4000 K | Acrylic bowl/cover frosted | 136 lm/W | 8,200 lumen |
| 911401552261 | WT198C LED40S/840 PSU L1200 CL | 120 degree(s) | 4000 K | - | 140 lm/W | 4,000 lumen |
| 911401552361 | WT198C LED60S/840 PSU L1500 CL | 120 degree(s) | 4000 K | - | 140 lm/W | 6,000 lumen |
| 911401552461 | WT198C LED19S/840 PSU L600 CL | 120 degree(s) | 4000 K | - | 127 lm/W | 1,900 lumen |
| 911401562761 | WT198C LED27S/840 PSD L1200 | 120 degree(s) | 4000 K | - | 132 lm/W | 2,700 lumen |
| 911401562861 | WT198C LED40S/840 PSD L1200 | 120 degree(s) | 4000 K | - | 140 lm/W | 4,000 lumen |
| 911401562961 | WT198C LED60S/840 PSD L1500 | 120 degree(s) | 4000 K | - | 140 lm/W | 6,000 lumen |
| 911401563061 | WT198C LED80S/840 PSD L1500 | 120 degree(s) | 4000 K | - | 140 lm/W | 8,000 lumen |
| 911401825580 | WT198C LED19S/840 PSU L600 | 120 degree(s) | 4000 K | - | 127 lm/W | 1,900 lumen |
| 911401825680 | WT198C LED27S/840 PSU L1200 | 120 degree(s) | 4000 K | - | 132 lm/W | 2,700 lumen |
| 911401825780 | WT198C LED40S/840 PSU L1200 | 120 degree(s) | 4000 K | - | 140 lm/W | 4,000 lumen |
| 911401825880 | WT198C LED60S/840 PSU L1500 | 120 degree(s) | 4000 K | - | 140 lm/W | 6,000 lumen |
| 911401825980 | WT198C LED80S/840 PSU L1500 | 120 degree(s) | 4000 K | - | 140 lm/W | 8,000 lumen |
| 911401826080 | WT198C LED18S/840 PSU PCO L600 | 120 degree(s) | 4000 K | - | 121 lm/W | 1,800 lumen |
| 911401826180 | WT198C LED25S/840 PSU PCO L1200 | 120 degree(s) | 4000 K | - | 122 lm/W | 2,500 lumen |

GreenPerform Waterproof G3

| Order Code | Full Product Name | Beam angle of light source | Correlated Color Temperature (Nom) | Optical cover/lens type | Luminous Efficacy (rated) (Nom) | Luminous Flux |
|--------------|---------------------------------|----------------------------|------------------------------------|----------------------------|---------------------------------|---------------|
| 911401826380 | WT198C LED37S/840 PSU PCO L1200 | 120 degree(s) | 4000 K | - | 128 lm/W | 3,700 lumen |
| 911401826480 | WT198C LED57S/840 PSU PCO L1500 | 120 degree(s) | 4000 K | - | 130 lm/W | 5,700 lumen |
| 911401826580 | WT198C LED75S/840 PSU PCO L1500 | 120 degree(s) | 4000 K | - | 133 lm/W | 7,500 lumen |
| 911401550081 | WT198X LED28S/840 WIA L1200 | - | 4000 K | Acrylic bowl/cover frosted | 140 lm/W | 2,800 lumen |
| 911401550181 | WT198X LED40S/840 WIA L1200 | - | 4000 K | Acrylic bowl/cover frosted | 133 lm/W | 4,000 lumen |

Operating and Electrical

| Order Code | Full Product Name | Input Voltage | Line Frequency | Power Consumption | Order Code | Full Product Name | Input Voltage | Line Frequency | Power Consumption |
|--------------|--------------------------------------|---------------|----------------|-------------------|--------------|--|---------------|----------------|-------------------|
| 911401514342 | WT198C LED10S/840 PSU L600 | 220 to 240 V | - | 7.8 W | 911401571491 | WT198X LED82S/840 L1 S L1500 | 220-240 V | 50 to 60 Hz | 59.1 W |
| 911401514442 | WT198C LED10S/840 PSU PCO L600 | 220 to 240 V | - | 7.8 W | 911401571591 | WT198X LED20S/865 L1 S L600 | 220-240 V | 50 to 60 Hz | 14.7 W |
| 911401551502 | WT198X LED20S/840 L1 W L600 | 220-240 V | 50 to 60 Hz | 14.7 W | 911401571891 | WT198X LED60S/865 L1 S L1500 | 220-240 V | 50 to 60 Hz | 43.6 W |
| 911401551602 | WT198X LED27S/840 L1 W L1200 | 220-240 V | 50 to 60 Hz | 18.8 W | 911401571991 | WT198X LED82S/865 L1 S L1500 | 220-240 V | 50 to 60 Hz | 59.1 W |
| 911401551702 | WT198X LED40S/840 L1 W L1200 | 220-240 V | 50 to 60 Hz | 28.9 W | 911401552502 | WT198X LED19S/840 L1 W PCO L600 | 220-240 V | 50 to 60 Hz | 14.7 W |
| 911401551802 | WT198X LED60S/840 L1 W L1500 | 220-240 V | 50 to 60 Hz | 43.6 W | 911401552602 | WT198X LED26S/840 L1 W PCO L1200 | 220-240 V | 50 to 60 Hz | 18.8 W |
| 911401551902 | WT198X LED82S/840 L1 W L1500 | 220-240 V | 50 to 60 Hz | 59.1 W | 911401552702 | WT198X LED38S/840 L1 W PCO L1200 | 220-240 V | 50 to 60 Hz | 28.9 W |
| 911401552002 | WT198X LED20S/865 L1 W L600 | 220-240 V | 50 to 60 Hz | 14.7 W | 911401552802 | WT198X LED57S/840 L1 W PCO L1500 | 220-240 V | 50 to 60 Hz | 43.6 W |
| 911401552102 | WT198X LED27S/865 L1 W L1200 | 220-240 V | 50 to 60 Hz | 18.8 W | 911401552902 | WT198X LED77S/840 L1 W PCO L1500 | 220-240 V | 50 to 60 Hz | 59.1 W |
| 911401552202 | WT198X LED40S/865 L1 W L1200 | 220-240 V | 50 to 60 Hz | 28.9 W | 911401553002 | WT198X LED19S/865 L1 W PCO L600 | 220-240 V | 50 to 60 Hz | 14.7 W |
| 911401552302 | WT198X LED60S/865 L1 W L1500 | 220-240 V | 50 to 60 Hz | 43.6 W | 911401553102 | WT198X LED26S/865 L1 W PCO L1200 | 220-240 V | 50 to 60 Hz | 18.8 W |
| 911401552402 | WT198X LED82S/865 L1 W L1500 | 220-240 V | 50 to 60 Hz | 59.1 W | 911401553202 | WT198X LED38S/865 L1 W PCO L1200 | 220-240 V | 50 to 60 Hz | 28.9 W |
| 911401571091 | WT198X LED20S/840 L1 S L600 | 220-240 V | 50 to 60 Hz | 14.7 W | 911401553302 | WT198X LED57S/865 L1 W PCO L1500 | 220-240 V | 50 to 60 Hz | 43.6 W |
| 911401571391 | WT198X LED60S/840 L1 S L1500 | 220-240 V | 50 to 60 Hz | 43.6 W | 911401553402 | WT198X LED77S/865 L1 W PCO L1500 | 220-240 V | 50 to 60 Hz | 59.1 W |

GreenPerform Waterproof G3

| Order Code | Full Product Name | Input Voltage | Line Frequency | Power |
|--------------|--|---------------|----------------|-------------|
| | | | | Consumption |
| 911401572091 | WT198X LED19S/840 L1 S PCO L600 | 220-240 V | 50 to 60 Hz | 14.7 W |
| 911401572391 | WT198X LED57S/840 L1 S PCO L1500 | 220-240 V | 50 to 60 Hz | 43.6 W |
| 911401572491 | WT198X LED77S/840 L1 S PCO L1500 | 220-240 V | 50 to 60 Hz | 59.1 W |
| 911401572591 | WT198X LED19S/865 L1 S PCO L600 | 220-240 V | 50 to 60 Hz | 14.7 W |
| 911401572891 | WT198X LED57S/865 L1 S PCO L1500 | 220-240 V | 50 to 60 Hz | 43.6 W |
| 911401572991 | WT198X LED77S/865 L1 S PCO L1500 | 220-240 V | 50 to 60 Hz | 59.1 W |
| 911401549981 | WT198X LED20S/840 WIA L600 | 220-240 V | 50 or 60 Hz | 16 W |
| 911401571191 | WT198X LED27S/840 L1 S L1200 | 220 to 240 V | 50 to 60 Hz | 21.1 W |
| 911401571291 | WT198X LED40S/840 L1 S L1200 | 220 to 240 V | 50 to 60 Hz | 28.9 W |
| 911401571691 | WT198X LED27S/865 L1 S L1200 | 220 to 240 V | 50 to 60 Hz | 21.1 W |
| 911401571791 | WT198X LED40S/865 L1 S L1200 | 220 to 240 V | 50 to 60 Hz | 28.9 W |
| 911401572191 | WT198X LED26S/840 L1 S PCO L1200 | 220 to 240 V | 50 to 60 Hz | 21.1 W |
| 911401572291 | WT198X LED38S/840 L1 S PCO L1200 | 220 to 240 V | 50 to 60 Hz | 28.9 W |
| 911401572691 | WT198X LED26S/865 L1 S PCO L1200 | 220 to 240 V | 50 to 60 Hz | 21.1 W |
| 911401572791 | WT198X LED38S/865 L1 S PCO L1200 | 220 to 240 V | 50 to 60 Hz | 28.9 W |
| 911401550281 | WT198X LED60S/840 WIA L1500 | 220-240 V | 50 or 60 Hz | 45 W |
| 911401550381 | WT198X LED82S/840 WIA L1500 | 220-240 V | 50 or 60 Hz | 60 W |
| 911401552261 | WT198C LED40S/840 PSU L1200 CL | 220 to 240 V | 50 or 60 Hz | 28.6 W |

| Order Code | Full Product Name | Input Voltage | Line Frequency | Power |
|--------------|---------------------------------------|---------------|----------------|-------------|
| | | | | Consumption |
| 911401552361 | WT198C LED60S/840 PSU L1500 CL | 220 to 240 V | 50 or 60 Hz | 42.7 W |
| 911401552461 | WT198C LED19S/840 PSU L600 CL | 220 to 240 V | 50 or 60 Hz | 15 W |
| 911401562761 | WT198C LED27S/840 PSD L1200 | 220 to 240 V | 50 or 60 Hz | 20.5 W |
| 911401562861 | WT198C LED40S/840 PSD L1200 | 220 to 240 V | 50 or 60 Hz | 28.6 W |
| 911401562961 | WT198C LED60S/840 PSD L1500 | 220 to 240 V | 50 or 60 Hz | 42.7 W |
| 911401563061 | WT198C LED80S/840 PSD L1500 | 220 to 240 V | 50 or 60 Hz | 57 W |
| 911401825580 | WT198C LED19S/840 PSU L600 | 220 to 240 V | 50 or 60 Hz | 15 W |
| 911401825680 | WT198C LED27S/840 PSU L1200 | 220 to 240 V | 50 or 60 Hz | 20.5 W |
| 911401825780 | WT198C LED40S/840 PSU L1200 | 220 to 240 V | 50 or 60 Hz | 28.6 W |
| 911401825880 | WT198C LED60S/840 PSU L1500 | 220 to 240 V | 50 or 60 Hz | 42.7 W |
| 911401825980 | WT198C LED80S/840 PSU L1500 | 220 to 240 V | 50 or 60 Hz | 57 W |
| 911401826080 | WT198C LED18S/840 PSU PCO L600 | 220 to 240 V | 50 or 60 Hz | 15 W |
| 911401826180 | WT198C LED25S/840 PSU PCO L1200 | 220 to 240 V | 50 or 60 Hz | 20.5 W |
| 911401826380 | WT198C LED37S/840 PSU PCO L1200 | 220 to 240 V | 50 or 60 Hz | 28.6 W |
| 911401826480 | WT198C LED57S/840 PSU PCO L1500 | 220 to 240 V | 50 or 60 Hz | 42.7 W |
| 911401826580 | WT198C LED75S/840 PSU PCO L1500 | 220 to 240 V | 50 or 60 Hz | 57 W |
| 911401550081 | WT198X LED28S/840 WIA L1200 | 220-240 V | 50 or 60 Hz | 20 W |

GreenPerform Waterproof G3

| Order Code | Full Product Name | Input Voltage | Line Frequency | Power |
|--------------|-----------------------------------|---------------|----------------|-------------|
| | | | | Consumption |
| 911401550181 | WT198X LED40S/840 WIA L1200 | 220-240 V | 50 or 60 Hz | 30 W |

Temperature

| Order Code | Full Product Name | Ambient temperature range |
|--------------|----------------------------------|---------------------------|
| 911401514342 | WT198C LED10S/840 PSU L600 | -20 to +45 °C |
| 911401514442 | WT198C LED10S/840 PSU PCO L600 | -20 to +45 °C |
| 911401551502 | WT198X LED20S/840 L1 W L600 | -20 to +45 °C |
| 911401551602 | WT198X LED27S/840 L1 W L1200 | -20 to +45 °C |
| 911401551702 | WT198X LED40S/840 L1 W L1200 | -20 to +45 °C |
| 911401551802 | WT198X LED60S/840 L1 W L1500 | -20 to +45 °C |
| 911401551902 | WT198X LED82S/840 L1 W L1500 | -20 to +45 °C |
| 911401552002 | WT198X LED20S/865 L1 W L600 | -20 to +45 °C |
| 911401552102 | WT198X LED27S/865 L1 W L1200 | -20 to +45 °C |
| 911401552202 | WT198X LED40S/865 L1 W L1200 | -20 to +45 °C |
| 911401552302 | WT198X LED60S/865 L1 W L1500 | -20 to +45 °C |
| 911401552402 | WT198X LED82S/865 L1 W L1500 | -20 to +45 °C |
| 911401571091 | WT198X LED20S/840 L1 S L600 | -20 to +45 °C |
| 911401571391 | WT198X LED60S/840 L1 S L1500 | -20 to +45 °C |
| 911401571491 | WT198X LED82S/840 L1 S L1500 | -20 to +45 °C |
| 911401571591 | WT198X LED20S/865 L1 S L600 | -20 to +45 °C |
| 911401571891 | WT198X LED60S/865 L1 S L1500 | -20 to +45 °C |
| 911401571991 | WT198X LED82S/865 L1 S L1500 | -20 to +45 °C |
| 911401552502 | WT198X LED19S/840 L1 W PCO L600 | -20 to +45 °C |
| 911401552602 | WT198X LED26S/840 L1 W PCO L1200 | -20 to +45 °C |
| 911401552702 | WT198X LED38S/840 L1 W PCO L1200 | -20 to +45 °C |
| 911401552802 | WT198X LED57S/840 L1 W PCO L1500 | -20 to +45 °C |
| 911401552902 | WT198X LED77S/840 L1 W PCO L1500 | -20 to +45 °C |
| 911401553002 | WT198X LED19S/865 L1 W PCO L600 | -20 to +45 °C |
| 911401553102 | WT198X LED26S/865 L1 W PCO L1200 | -20 to +45 °C |
| 911401553202 | WT198X LED38S/865 L1 W PCO L1200 | -20 to +45 °C |
| 911401553302 | WT198X LED57S/865 L1 W PCO L1500 | -20 to +45 °C |
| 911401553402 | WT198X LED77S/865 L1 W PCO L1500 | -20 to +45 °C |
| 911401572091 | WT198X LED19S/840 L1 S PCO L600 | -20 to +45 °C |
| 911401572391 | WT198X LED57S/840 L1 S PCO L1500 | -20 to +45 °C |
| 911401572491 | WT198X LED77S/840 L1 S PCO L1500 | -20 to +45 °C |
| 911401572591 | WT198X LED19S/865 L1 S PCO L600 | -20 to +45 °C |

| Order Code | Full Product Name | Ambient temperature range |
|--------------|----------------------------------|---------------------------|
| 911401572891 | WT198X LED57S/865 L1 S PCO L1500 | -20 to +45 °C |
| 911401572991 | WT198X LED77S/865 L1 S PCO L1500 | -20 to +45 °C |
| 911401549981 | WT198X LED20S/840 WIA L600 | -20 to +45 °C |
| 911401571191 | WT198X LED27S/840 L1 S L1200 | -20 to +45 °C |
| 911401571291 | WT198X LED40S/840 L1 S L1200 | -20 to +45 °C |
| 911401571691 | WT198X LED27S/865 L1 S L1200 | -20 to +45 °C |
| 911401571791 | WT198X LED40S/865 L1 S L1200 | -20 to +45 °C |
| 911401572191 | WT198X LED26S/840 L1 S PCO L1200 | -20 to +45 °C |
| 911401572291 | WT198X LED38S/840 L1 S PCO L1200 | -20 to +45 °C |
| 911401572691 | WT198X LED26S/865 L1 S PCO L1200 | -20 to +45 °C |
| 911401572791 | WT198X LED38S/865 L1 S PCO L1200 | -20 to +45 °C |
| 911401550281 | WT198X LED60S/840 WIA L1500 | -20 to +45 °C |
| 911401550381 | WT198X LED82S/840 WIA L1500 | -20 to +40 °C |
| 911401552261 | WT198C LED40S/840 PSU L1200 CL | -20 to +45 °C |
| 911401552361 | WT198C LED60S/840 PSU L1500 CL | -20 to +45 °C |
| 911401552461 | WT198C LED19S/840 PSU L600 CL | -20 to +45 °C |
| 911401562761 | WT198C LED27S/840 PSD L1200 | -20 to +45 °C |
| 911401562861 | WT198C LED40S/840 PSD L1200 | -20 to +45 °C |
| 911401562961 | WT198C LED60S/840 PSD L1500 | -20 to +45 °C |
| 911401563061 | WT198C LED80S/840 PSD L1500 | -20 to +45 °C |
| 911401825580 | WT198C LED19S/840 PSU L600 | -20 to +45 °C |
| 911401825680 | WT198C LED27S/840 PSU L1200 | -20 to +45 °C |
| 911401825780 | WT198C LED40S/840 PSU L1200 | -20 to +45 °C |
| 911401825880 | WT198C LED60S/840 PSU L1500 | -20 to +45 °C |
| 911401825980 | WT198C LED80S/840 PSU L1500 | -20 to +45 °C |
| 911401826080 | WT198C LED18S/840 PSU PCO L600 | -20 to +45 °C |
| 911401826180 | WT198C LED25S/840 PSU PCO L1200 | -20 to +45 °C |
| 911401826380 | WT198C LED37S/840 PSU PCO L1200 | -20 to +45 °C |
| 911401826480 | WT198C LED57S/840 PSU PCO L1500 | -20 to +45 °C |
| 911401826580 | WT198C LED75S/840 PSU PCO L1500 | -20 to +45 °C |
| 911401550081 | WT198X LED28S/840 WIA L1200 | -20 to +45 °C |
| 911401550181 | WT198X LED40S/840 WIA L1200 | -20 to +45 °C |

Controls and Dimming

| Order Code | Full Product Name | Dimmable |
|--------------|--------------------------------|--------------|
| 911401514342 | WT198C LED10S/840 PSU L600 | No |
| 911401514442 | WT198C LED10S/840 PSU PCO L600 | No |
| 911401551502 | WT198X LED20S/840 L1 W L600 | Wireless Dim |
| 911401551602 | WT198X LED27S/840 L1 W L1200 | Wireless Dim |
| 911401551702 | WT198X LED40S/840 L1 W L1200 | Wireless Dim |
| 911401551802 | WT198X LED60S/840 L1 W L1500 | Wireless Dim |
| 911401551902 | WT198X LED82S/840 L1 W L1500 | Wireless Dim |

| Order Code | Full Product Name | Dimmable |
|--------------|------------------------------|--------------|
| 911401552002 | WT198X LED20S/865 L1 W L600 | Wireless Dim |
| 911401552102 | WT198X LED27S/865 L1 W L1200 | Wireless Dim |
| 911401552202 | WT198X LED40S/865 L1 W L1200 | Wireless Dim |
| 911401552302 | WT198X LED60S/865 L1 W L1500 | Wireless Dim |
| 911401552402 | WT198X LED82S/865 L1 W L1500 | Wireless Dim |
| 911401571091 | WT198X LED20S/840 L1 S L600 | Wireless Dim |
| 911401571391 | WT198X LED60S/840 L1 S L1500 | Wireless Dim |

GreenPerform Waterproof G3

| Order Code | Full Product Name | Dimmable |
|--------------|----------------------------------|--------------|
| 911401571491 | WT198X LED82S/840 L1 S L1500 | Wireless Dim |
| 911401571591 | WT198X LED20S/865 L1 S L600 | Wireless Dim |
| 911401571891 | WT198X LED60S/865 L1 S L1500 | Wireless Dim |
| 911401571991 | WT198X LED82S/865 L1 S L1500 | Wireless Dim |
| 911401552502 | WT198X LED19S/840 L1 W PCO L600 | Wireless Dim |
| 911401552602 | WT198X LED26S/840 L1 W PCO L1200 | Wireless Dim |
| 911401552702 | WT198X LED38S/840 L1 W PCO L1200 | Wireless Dim |
| 911401552802 | WT198X LED57S/840 L1 W PCO L1500 | Wireless Dim |
| 911401552902 | WT198X LED77S/840 L1 W PCO L1500 | Wireless Dim |
| 911401553002 | WT198X LED19S/865 L1 W PCO L600 | Wireless Dim |
| 911401553102 | WT198X LED26S/865 L1 W PCO L1200 | Wireless Dim |
| 911401553202 | WT198X LED38S/865 L1 W PCO L1200 | Wireless Dim |
| 911401553302 | WT198X LED57S/865 L1 W PCO L1500 | Wireless Dim |
| 911401553402 | WT198X LED77S/865 L1 W PCO L1500 | Wireless Dim |
| 911401572091 | WT198X LED19S/840 L1 S PCO L600 | Wireless Dim |
| 911401572391 | WT198X LED57S/840 L1 S PCO L1500 | Wireless Dim |
| 911401572491 | WT198X LED77S/840 L1 S PCO L1500 | Wireless Dim |
| 911401572591 | WT198X LED19S/865 L1 S PCO L600 | Wireless Dim |
| 911401572891 | WT198X LED57S/865 L1 S PCO L1500 | Wireless Dim |
| 911401572991 | WT198X LED77S/865 L1 S PCO L1500 | Wireless Dim |
| 911401549981 | WT198X LED20S/840 WIA L600 | Wireless Dim |
| 911401571191 | WT198X LED27S/840 L1 S L1200 | Limited |
| 911401571291 | WT198X LED40S/840 L1 S L1200 | Limited |
| 911401571691 | WT198X LED27S/865 L1 S L1200 | Limited |
| 911401571791 | WT198X LED40S/865 L1 S L1200 | Limited |

| Order Code | Full Product Name | Dimmable |
|--------------|----------------------------------|--------------|
| 911401572191 | WT198X LED26S/840 L1 S PCO L1200 | Limited |
| 911401572291 | WT198X LED38S/840 L1 S PCO L1200 | Limited |
| 911401572691 | WT198X LED26S/865 L1 S PCO L1200 | Limited |
| 911401572791 | WT198X LED38S/865 L1 S PCO L1200 | Limited |
| 911401550281 | WT198X LED60S/840 WIA L1500 | Wireless Dim |
| 911401550381 | WT198X LED82S/840 WIA L1500 | Wireless Dim |
| 911401552261 | WT198C LED40S/840 PSU L1200 CL | No |
| 911401552361 | WT198C LED60S/840 PSU L1500 CL | No |
| 911401552461 | WT198C LED19S/840 PSU L600 CL | No |
| 911401562761 | WT198C LED27S/840 PSD L1200 | Yes |
| 911401562861 | WT198C LED40S/840 PSD L1200 | Yes |
| 911401562961 | WT198C LED60S/840 PSD L1500 | Yes |
| 911401563061 | WT198C LED80S/840 PSD L1500 | Yes |
| 911401825580 | WT198C LED19S/840 PSU L600 | No |
| 911401825680 | WT198C LED27S/840 PSU L1200 | No |
| 911401825780 | WT198C LED40S/840 PSU L1200 | No |
| 911401825880 | WT198C LED60S/840 PSU L1500 | No |
| 911401825980 | WT198C LED80S/840 PSU L1500 | No |
| 911401826080 | WT198C LED18S/840 PSU PCO L600 | No |
| 911401826180 | WT198C LED25S/840 PSU PCO L1200 | No |
| 911401826380 | WT198C LED37S/840 PSU PCO L1200 | No |
| 911401826480 | WT198C LED57S/840 PSU PCO L1500 | No |
| 911401826580 | WT198C LED75S/840 PSU PCO L1500 | No |
| 911401550081 | WT198X LED28S/840 WIA L1200 | Wireless Dim |
| 911401550181 | WT198X LED40S/840 WIA L1200 | Wireless Dim |

Approval and Application

| Order Code | Full Product Name | Flammability | | Ingress protection |
|--------------|--------------------------------------|--------------|----------------|--------------------|
| | | mark | Glow-wire test | code |
| 911401514342 | WT198C LED10S/840 PSU L600 | - | - | IP65 |
| 911401514442 | WT198C LED10S/840 PSU PCO L600 | - | - | IP65 |
| 911401551502 | WT198X LED20S/840 L1 W L600 | - | - | IP43/65 |
| 911401551602 | WT198X LED27S/840 L1 W L1200 | - | - | IP43/65 |
| 911401551702 | WT198X LED40S/840 L1 W L1200 | - | - | IP43/65 |
| 911401551802 | WT198X LED60S/840 L1 W L1500 | - | - | IP43/65 |
| 911401551902 | WT198X LED82S/840 L1 W L1500 | - | - | IP43/65 |

| Order Code | Full Product Name | Flammability | | Ingress protection |
|--------------|------------------------------------|--------------|----------------|--------------------|
| | | mark | Glow-wire test | code |
| 911401552002 | WT198X LED20S/865 L1 W L600 | - | - | IP43/65 |
| 911401552102 | WT198X LED27S/865 L1 W L1200 | - | - | IP43/65 |
| 911401552202 | WT198X LED40S/865 L1 W L1200 | - | - | IP43/65 |
| 911401552302 | WT198X LED60S/865 L1 W L1500 | - | - | IP43/65 |
| 911401552402 | WT198X LED82S/865 L1 W L1500 | - | - | IP43/65 |
| 911401571091 | WT198X LED20S/840 L1 S L600 | - | - | IP43/65 |
| 911401571391 | WT198X LED60S/840 L1 S L1500 | - | - | IP43/65 |

GreenPerform Waterproof G3

| Order Code | Full Product Name | Flammability | | Ingress protection code |
|--------------|--|--------------|----------------|-------------------------|
| | | mark | Glow-wire test | |
| 911401571491 | WT198X LED82S/840 L1 S L1500 | - | - | IP43/65 |
| 911401571591 | WT198X LED20S/865 L1 S L600 | - | - | IP43/65 |
| 911401571891 | WT198X LED60S/865 L1 S L1500 | - | - | IP43/65 |
| 911401571991 | WT198X LED82S/865 L1 S L1500 | - | - | IP43/65 |
| 911401552502 | WT198X LED19S/840 L1 W PCO L600 | - | - | IP43/65 |
| 911401552602 | WT198X LED26S/840 L1 W PCO L1200 | - | - | IP43/65 |
| 911401552702 | WT198X LED38S/840 L1 W PCO L1200 | - | - | IP43/65 |
| 911401552802 | WT198X LED57S/840 L1 W PCO L1500 | - | - | IP43/65 |
| 911401552902 | WT198X LED77S/840 L1 W PCO L1500 | - | - | IP43/65 |
| 911401553002 | WT198X LED19S/865 L1 W PCO L600 | - | - | IP43/65 |
| 911401553102 | WT198X LED26S/865 L1 W PCO L1200 | - | - | IP43/65 |
| 911401553202 | WT198X LED38S/865 L1 W PCO L1200 | - | - | IP43/65 |
| 911401553302 | WT198X LED57S/865 L1 W PCO L1500 | - | - | IP43/65 |
| 911401553402 | WT198X LED77S/865 L1 W PCO L1500 | - | - | IP43/65 |
| 911401572091 | WT198X LED19S/840 L1 S PCO L600 | - | - | IP43/65 |
| 911401572391 | WT198X LED57S/840 L1 S PCO L1500 | - | - | IP43/65 |

| Order Code | Full Product Name | Flammability | | Ingress protection code |
|--------------|--|---|----------------|-------------------------|
| | | mark | Glow-wire test | |
| 911401572491 | WT198X LED77S/840 L1 S PCO L1500 | - | - | IP43/65 |
| 911401572591 | WT198X LED19S/865 L1 S PCO L600 | - | - | IP43/65 |
| 911401572891 | WT198X LED57S/865 L1 S PCO L1500 | - | - | IP43/65 |
| 911401572991 | WT198X LED77S/865 L1 S PCO L1500 | - | - | IP43/65 |
| 911401549981 | WT198X LED20S/840 WIA L600 | For mounting on normally flammable surfaces | - | IP65 |
| 911401571191 | WT198X LED27S/840 L1 S L1200 | For mounting on normally flammable surfaces | - | IP65 |
| 911401571291 | WT198X LED40S/840 L1 S L1200 | For mounting on normally flammable surfaces | - | IP65 |
| 911401571691 | WT198X LED27S/865 L1 S L1200 | For mounting on normally flammable surfaces | - | IP65 |
| 911401571791 | WT198X LED40S/865 L1 S L1200 | For mounting on normally flammable surfaces | - | IP65 |
| 911401572191 | WT198X LED26S/840 L1 S PCO L1200 | For mounting on normally flammable surfaces | - | IP65 |
| 911401572291 | WT198X LED38S/840 L1 S PCO L1200 | For mounting on normally flammable surfaces | - | IP65 |
| 911401572691 | WT198X LED26S/865 L1 S PCO L1200 | For mounting on normally flammable surfaces | - | IP65 |
| 911401572791 | WT198X LED38S/865 L1 S PCO L1200 | For mounting on normally flammable surfaces | - | IP65 |

GreenPerform Waterproof G3

| Order Code | Full Product Name | Flammability mark | Glow-wire test | Ingress protection code |
|--------------|--------------------------------------|---|-----------------------------------|-------------------------|
| 911401550281 | WT198X LED60S/840 WIA L1500 | For mounting on normally flammable surfaces | - | IP65 |
| 911401550381 | WT198X LED82S/840 WIA L1500 | For mounting on normally flammable surfaces | - | IP65 |
| 911401552261 | WT198C LED40S/840 PSU L1200 CL | - | Temperature 850 °C, duration 30 s | IP65 |
| 911401552361 | WT198C LED60S/840 PSU L1500 CL | - | Temperature 850 °C, duration 30 s | IP65 |
| 911401552461 | WT198C LED19S/840 PSU L600 CL | - | Temperature 850 °C, duration 30 s | IP65 |
| 911401562761 | WT198C LED27S/840 PSD L1200 | - | Temperature 850 °C, duration 30 s | IP65 |
| 911401562861 | WT198C LED40S/840 PSD L1200 | - | Temperature 850 °C, duration 30 s | IP65 |
| 911401562961 | WT198C LED60S/840 PSD L1500 | - | Temperature 850 °C, duration 30 s | IP65 |
| 911401563061 | WT198C LED80S/840 PSD L1500 | - | Temperature 850 °C, duration 30 s | IP65 |
| 911401825580 | WT198C LED19S/840 PSU L600 | - | Temperature 850 °C, duration 30 s | IP65 |
| 911401825680 | WT198C LED27S/840 PSU L1200 | - | Temperature 850 °C, duration 30 s | IP65 |

| Order Code | Full Product Name | Flammability mark | Glow-wire test | Ingress protection code |
|--------------|---------------------------------------|---|-----------------------------------|-------------------------|
| 911401825780 | WT198C LED40S/840 PSU L1200 | - | Temperature 850 °C, duration 30 s | IP65 |
| 911401825880 | WT198C LED60S/840 PSU L1500 | - | Temperature 850 °C, duration 30 s | IP65 |
| 911401825980 | WT198C LED80S/840 PSU L1500 | - | Temperature 850 °C, duration 30 s | IP65 |
| 911401826080 | WT198C LED18S/840 PSU PCO L600 | - | Temperature 850 °C, duration 30 s | IP65 |
| 911401826180 | WT198C LED25S/840 PSU PCO L1200 | - | Temperature 850 °C, duration 30 s | IP65 |
| 911401826380 | WT198C LED37S/840 PSU PCO L1200 | - | Temperature 850 °C, duration 30 s | IP65 |
| 911401826480 | WT198C LED57S/840 PSU PCO L1500 | - | Temperature 850 °C, duration 30 s | IP65 |
| 911401826580 | WT198C LED75S/840 PSU PCO L1500 | - | Temperature 850 °C, duration 30 s | IP65 |
| 911401550081 | WT198X LED28S/840 WIA L1200 | For mounting on normally flammable surfaces | - | IP65 |
| 911401550181 | WT198X LED40S/840 WIA L1200 | For mounting on normally flammable surfaces | - | IP65 |

Initial Performance (IEC Compliant)

| Order Code | Full Product Name | Initial chromaticity | Luminous flux tolerance |
|--------------|--------------------------------|----------------------|-------------------------|
| 911401514342 | WT198C LED10S/840 PSU L600 | - | -10% / +10% |
| 911401514442 | WT198C LED10S/840 PSU PCO L600 | - | -10% / +10% |
| 911401551502 | WT198X LED20S/840 L1 W L600 | - | +/-10% |
| 911401551602 | WT198X LED27S/840 L1 W L1200 | - | +/-10% |
| 911401551702 | WT198X LED40S/840 L1 W L1200 | - | +/-10% |
| 911401551802 | WT198X LED60S/840 L1 W L1500 | - | +/-10% |
| 911401551902 | WT198X LED82S/840 L1 W L1500 | - | +/-10% |
| 911401552002 | WT198X LED20S/865 L1 W L600 | - | +/-10% |
| 911401552102 | WT198X LED27S/865 L1 W L1200 | - | +/-10% |

| Order Code | Full Product Name | Initial chromaticity | Luminous flux tolerance |
|--------------|------------------------------|----------------------|-------------------------|
| 911401552202 | WT198X LED40S/865 L1 W L1200 | - | +/-10% |
| 911401552302 | WT198X LED60S/865 L1 W L1500 | - | +/-10% |
| 911401552402 | WT198X LED82S/865 L1 W L1500 | - | +/-10% |
| 911401571091 | WT198X LED20S/840 L1 S L600 | - | +/-10% |
| 911401571391 | WT198X LED60S/840 L1 S L1500 | - | +/-10% |
| 911401571491 | WT198X LED82S/840 L1 S L1500 | - | +/-10% |
| 911401571591 | WT198X LED20S/865 L1 S L600 | - | +/-10% |
| 911401571891 | WT198X LED60S/865 L1 S L1500 | - | +/-10% |
| 911401571991 | WT198X LED82S/865 L1 S L1500 | - | +/-10% |

GreenPerform Waterproof G3

| Order Code | Full Product Name | Initial chromaticity | Luminous flux tolerance |
|--------------|----------------------------------|---------------------------|-------------------------|
| 911401552502 | WT198X LED19S/840 L1 W PCO L600 | - | +/-10% |
| 911401552602 | WT198X LED26S/840 L1 W PCO L1200 | - | +/-10% |
| 911401552702 | WT198X LED38S/840 L1 W PCO L1200 | - | +/-10% |
| 911401552802 | WT198X LED57S/840 L1 W PCO L1500 | - | +/-10% |
| 911401552902 | WT198X LED77S/840 L1 W PCO L1500 | - | +/-10% |
| 911401553002 | WT198X LED19S/865 L1 W PCO L600 | - | +/-10% |
| 911401553102 | WT198X LED26S/865 L1 W PCO L1200 | - | +/-10% |
| 911401553202 | WT198X LED38S/865 L1 W PCO L1200 | - | +/-10% |
| 911401553302 | WT198X LED57S/865 L1 W PCO L1500 | - | +/-10% |
| 911401553402 | WT198X LED77S/865 L1 W PCO L1500 | - | +/-10% |
| 911401572091 | WT198X LED19S/840 L1 S PCO L600 | - | +/-10% |
| 911401572391 | WT198X LED57S/840 L1 S PCO L1500 | - | +/-10% |
| 911401572491 | WT198X LED77S/840 L1 S PCO L1500 | - | +/-10% |
| 911401572591 | WT198X LED19S/865 L1 S PCO L600 | - | +/-10% |
| 911401572891 | WT198X LED57S/865 L1 S PCO L1500 | - | +/-10% |
| 911401572991 | WT198X LED77S/865 L1 S PCO L1500 | - | +/-10% |
| 911401549981 | WT198X LED20S/840 WIA L600 | (0.3742,0.3698) SDCM<3 | +/-10% |
| 911401571191 | WT198X LED27S/840 L1 S L1200 | 5 | +/-10% |
| 911401571291 | WT198X LED40S/840 L1 S L1200 | 5 | +/-10% |
| 911401571691 | WT198X LED27S/865 L1 S L1200 | 5 | +/-10% |
| 911401571791 | WT198X LED40S/865 L1 S L1200 | 5 | +/-10% |
| 911401572191 | WT198X LED26S/840 L1 S PCO L1200 | 5 | +/-10% |

| Order Code | Full Product Name | Initial chromaticity | Luminous flux tolerance |
|--------------|----------------------------------|---------------------------|-------------------------|
| 911401572291 | WT198X LED38S/840 L1 S PCO L1200 | 5 | +/-10% |
| 911401572691 | WT198X LED26S/865 L1 S PCO L1200 | 5 | +/-10% |
| 911401572791 | WT198X LED38S/865 L1 S PCO L1200 | 5 | +/-10% |
| 911401550281 | WT198X LED60S/840 WIA L1500 | (0.3742,0.3698) SDCM<3 | +/-10% |
| 911401550381 | WT198X LED82S/840 WIA L1500 | (0.3742,0.3698) SDCM<3 | +/-10% |
| 911401552261 | WT198C LED40S/840 PSU L1200 CL | (0.38,0.38) | +/-10% |
| 911401552361 | WT198C LED60S/840 PSU L1500 CL | (0.38,0.38) | +/-10% |
| 911401552461 | WT198C LED19S/840 PSU L600 CL | (0.38,0.38) | +/-10% |
| 911401562761 | WT198C LED27S/840 PSD L1200 | (0.38,0.38) | +/-10% |
| 911401562861 | WT198C LED40S/840 PSD L1200 | (0.38,0.38) | +/-10% |
| 911401562961 | WT198C LED60S/840 PSD L1500 | (0.38,0.38) | +/-10% |
| 911401563061 | WT198C LED80S/840 PSD L1500 | (0.38,0.38) | +/-10% |
| 911401825580 | WT198C LED19S/840 PSU L600 | (0.38,0.38) | +/-10% |
| 911401825680 | WT198C LED27S/840 PSU L1200 | (0.38,0.38) | +/-10% |
| 911401825780 | WT198C LED40S/840 PSU L1200 | (0.38,0.38) | +/-10% |
| 911401825880 | WT198C LED60S/840 PSU L1500 | (0.38,0.38) | +/-10% |
| 911401825980 | WT198C LED80S/840 PSU L1500 | (0.38,0.38) | +/-10% |
| 911401826080 | WT198C LED18S/840 PSU PCO L600 | (0.38,0.38) | +/-10% |
| 911401826180 | WT198C LED25S/840 PSU PCO L1200 | (0.38,0.38) | +/-10% |
| 911401826380 | WT198C LED37S/840 PSU PCO L1200 | (0.38,0.38) | +/-10% |
| 911401826480 | WT198C LED57S/840 PSU PCO L1500 | (0.38,0.38) | +/-10% |
| 911401826580 | WT198C LED75S/840 PSU PCO L1500 | (0.38,0.38) | +/-10% |
| 911401550081 | WT198X LED28S/840 WIA L1200 | (0.3742,0.3698) SDCM<3 | +/-10% |
| 911401550181 | WT198X LED40S/840 WIA L1200 | (0.3742,0.3698) SDCM<3 | +/-10% |

Over Time Performance (IEC Compliant)

| Order Code | Full Product Name | Driver failure rate at 5000 h | Median useful life L80B50 | Median useful life L90B50 |
|--------------|--------------------------------|-------------------------------|---------------------------|---------------------------|
| 911401514342 | WT198C LED10S/840 PSU L600 | - | - | - |
| 911401514442 | WT198C LED10S/840 PSU PCO L600 | - | - | - |

| Order Code | Full Product Name | Driver failure rate at 5000 h | Median useful life L80B50 | Median useful life L90B50 |
|--------------|------------------------------|-------------------------------|---------------------------|---------------------------|
| 911401551502 | WT198X LED20S/840 L1 W L600 | - | - | - |
| 911401551602 | WT198X LED27S/840 L1 W L1200 | - | - | - |

GreenPerform Waterproof G3

| Order Code | Full Product Name | Driver failure rate at 5000 h | Median useful life L80B50 | Median useful life L90B50 |
|--------------|----------------------------------|-------------------------------|---------------------------|---------------------------|
| 911401551702 | WT198X LED40S/840 L1 W L1200 | - | - | - |
| 911401551802 | WT198X LED60S/840 L1 W L1500 | - | - | - |
| 911401551902 | WT198X LED82S/840 L1 W L1500 | - | - | - |
| 911401552002 | WT198X LED20S/865 L1 W L600 | - | - | - |
| 911401552102 | WT198X LED27S/865 L1 W L1200 | - | - | - |
| 911401552202 | WT198X LED40S/865 L1 W L1200 | - | - | - |
| 911401552302 | WT198X LED60S/865 L1 W L1500 | - | - | - |
| 911401552402 | WT198X LED82S/865 L1 W L1500 | - | - | - |
| 911401571091 | WT198X LED20S/840 L1 S L600 | - | - | - |
| 911401571391 | WT198X LED60S/840 L1 S L1500 | - | - | - |
| 911401571491 | WT198X LED82S/840 L1 S L1500 | - | - | - |
| 911401571591 | WT198X LED20S/865 L1 S L600 | - | - | - |
| 911401571891 | WT198X LED60S/865 L1 S L1500 | - | - | - |
| 911401571991 | WT198X LED82S/865 L1 S L1500 | - | - | - |
| 911401552502 | WT198X LED19S/840 L1 W PCO L600 | - | - | - |
| 911401552602 | WT198X LED26S/840 L1 W PCO L1200 | - | - | - |
| 911401552702 | WT198X LED38S/840 L1 W PCO L1200 | - | - | - |
| 911401552802 | WT198X LED57S/840 L1 W PCO L1500 | - | - | - |
| 911401552902 | WT198X LED77S/840 L1 W PCO L1500 | - | - | - |
| 911401553002 | WT198X LED19S/865 L1 W PCO L600 | - | - | - |
| 911401553102 | WT198X LED26S/865 L1 W PCO L1200 | - | - | - |
| 911401553202 | WT198X LED38S/865 L1 W PCO L1200 | - | - | - |
| 911401553302 | WT198X LED57S/865 L1 W PCO L1500 | - | - | - |
| 911401553402 | WT198X LED77S/865 L1 W PCO L1500 | - | - | - |
| 911401572091 | WT198X LED19S/840 L1 S PCO L600 | - | - | - |

| Order Code | Full Product Name | Driver failure rate at 5000 h | Median useful life L80B50 | Median useful life L90B50 |
|--------------|----------------------------------|-------------------------------|---------------------------|---------------------------|
| 911401572391 | WT198X LED57S/840 L1 S PCO L1500 | - | - | - |
| 911401572491 | WT198X LED77S/840 L1 S PCO L1500 | - | - | - |
| 911401572591 | WT198X LED19S/865 L1 S PCO L600 | - | - | - |
| 911401572891 | WT198X LED57S/865 L1 S PCO L1500 | - | - | - |
| 911401572991 | WT198X LED77S/865 L1 S PCO L1500 | - | - | - |
| 911401549981 | WT198X LED20S/840 WIA L600 | - | - | - |
| 911401571191 | WT198X LED27S/840 L1 S L1200 | - | - | - |
| 911401571291 | WT198X LED40S/840 L1 S L1200 | - | - | - |
| 911401571691 | WT198X LED27S/865 L1 S L1200 | - | - | - |
| 911401571791 | WT198X LED40S/865 L1 S L1200 | - | - | - |
| 911401572191 | WT198X LED26S/840 L1 S PCO L1200 | - | - | - |
| 911401572291 | WT198X LED38S/840 L1 S PCO L1200 | - | - | - |
| 911401572691 | WT198X LED26S/865 L1 S PCO L1200 | - | - | - |
| 911401572791 | WT198X LED38S/865 L1 S PCO L1200 | - | - | - |
| 911401550281 | WT198X LED60S/840 WIA L1500 | - | - | - |
| 911401550381 | WT198X LED82S/840 WIA L1500 | - | - | - |
| 911401552261 | WT198C LED40S/840 PSU L1200 CL | 0.01 % | 42,000 hour(s) | 20,000 hour(s) |
| 911401552361 | WT198C LED60S/840 PSU L1500 CL | 0.01 % | 42,000 hour(s) | 20,000 hour(s) |
| 911401552461 | WT198C LED19S/840 PSU L600 CL | 0.01 % | 42,000 hour(s) | 20,000 hour(s) |
| 911401562761 | WT198C LED27S/840 PSD L1200 | 0.01 % | 42,000 hour(s) | 20,000 hour(s) |
| 911401562861 | WT198C LED40S/840 PSD L1200 | 0.01 % | 42,000 hour(s) | 20,000 hour(s) |
| 911401562961 | WT198C LED60S/840 PSD L1500 | 0.01 % | 42,000 hour(s) | 20,000 hour(s) |
| 911401563061 | WT198C LED80S/840 PSD L1500 | 0.01 % | 42,000 hour(s) | 20,000 hour(s) |
| 911401825580 | WT198C LED19S/840 PSU L600 | 1 % | 42,000 hour(s) | 20,000 hour(s) |
| 911401825680 | WT198C LED27S/840 PSU L1200 | 1 % | 42,000 hour(s) | 20,000 hour(s) |

GreenPerform Waterproof G3

| Order Code | Full Product Name | Driver failure rate at 5000 h | Median useful life L80B50 | Median useful life L90B50 |
|--------------|---------------------------------|-------------------------------|---------------------------|---------------------------|
| 911401825780 | WT198C LED40S/840 PSU L1200 | 1% | 42,000 hour(s) | 20,000 hour(s) |
| 911401825880 | WT198C LED60S/840 PSU L1500 | 1% | 42,000 hour(s) | 20,000 hour(s) |
| 911401825980 | WT198C LED80S/840 PSU L1500 | 1% | 42,000 hour(s) | 20,000 hour(s) |
| 911401826080 | WT198C LED18S/840 PSU PCO L600 | 1% | 42,000 hour(s) | 20,000 hour(s) |
| 911401826180 | WT198C LED25S/840 PSU PCO L1200 | 1% | 42,000 hour(s) | 20,000 hour(s) |

| Order Code | Full Product Name | Driver failure rate at 5000 h | Median useful life L80B50 | Median useful life L90B50 |
|--------------|---------------------------------|-------------------------------|---------------------------|---------------------------|
| 911401826380 | WT198C LED37S/840 PSU PCO L1200 | 1% | 42,000 hour(s) | 20,000 hour(s) |
| 911401826480 | WT198C LED57S/840 PSU PCO L1500 | 1% | 42,000 hour(s) | 20,000 hour(s) |
| 911401826580 | WT198C LED75S/840 PSU PCO L1500 | 1% | 42,000 hour(s) | 20,000 hour(s) |
| 911401550081 | WT198X LED28S/840 WIA L1200 | - | - | - |
| 911401550181 | WT198X LED40S/840 WIA L1200 | - | - | - |

Application Conditions

| Order Code | Full Product Name | Maximum dim level | Suitable for random switching |
|--------------|----------------------------------|-------------------|-------------------------------|
| 911401514342 | WT198C LED10S/840 PSU L600 | - | - |
| 911401514442 | WT198C LED10S/840 PSU PCO L600 | - | - |
| 911401551502 | WT198X LED20S/840 L1 W L600 | - | - |
| 911401551602 | WT198X LED27S/840 L1 W L1200 | - | - |
| 911401551702 | WT198X LED40S/840 L1 W L1200 | - | - |
| 911401551802 | WT198X LED60S/840 L1 W L1500 | - | - |
| 911401551902 | WT198X LED82S/840 L1 W L1500 | - | - |
| 911401552002 | WT198X LED20S/865 L1 W L600 | - | - |
| 911401552102 | WT198X LED27S/865 L1 W L1200 | - | - |
| 911401552202 | WT198X LED40S/865 L1 W L1200 | - | - |
| 911401552302 | WT198X LED60S/865 L1 W L1500 | - | - |
| 911401552402 | WT198X LED82S/865 L1 W L1500 | - | - |
| 911401571091 | WT198X LED20S/840 L1 S L600 | - | - |
| 911401571391 | WT198X LED60S/840 L1 S L1500 | - | - |
| 911401571491 | WT198X LED82S/840 L1 S L1500 | - | - |
| 911401571591 | WT198X LED20S/865 L1 S L600 | - | - |
| 911401571891 | WT198X LED60S/865 L1 S L1500 | - | - |
| 911401571991 | WT198X LED82S/865 L1 S L1500 | - | - |
| 911401552502 | WT198X LED19S/840 L1 W PCO L600 | - | - |
| 911401552602 | WT198X LED26S/840 L1 W PCO L1200 | - | - |
| 911401552702 | WT198X LED38S/840 L1 W PCO L1200 | - | - |
| 911401552802 | WT198X LED57S/840 L1 W PCO L1500 | - | - |
| 911401552902 | WT198X LED77S/840 L1 W PCO L1500 | - | - |
| 911401553002 | WT198X LED19S/865 L1 W PCO L600 | - | - |
| 911401553102 | WT198X LED26S/865 L1 W PCO L1200 | - | - |
| 911401553202 | WT198X LED38S/865 L1 W PCO L1200 | - | - |
| 911401553302 | WT198X LED57S/865 L1 W PCO L1500 | - | - |

| Order Code | Full Product Name | Maximum dim level | Suitable for random switching |
|--------------|----------------------------------|-------------------|-------------------------------|
| 911401553402 | WT198X LED77S/865 L1 W PCO L1500 | - | - |
| 911401572091 | WT198X LED19S/840 L1 S PCO L600 | - | - |
| 911401572391 | WT198X LED57S/840 L1 S PCO L1500 | - | - |
| 911401572491 | WT198X LED77S/840 L1 S PCO L1500 | - | - |
| 911401572591 | WT198X LED19S/865 L1 S PCO L600 | - | - |
| 911401572891 | WT198X LED57S/865 L1 S PCO L1500 | - | - |
| 911401572991 | WT198X LED77S/865 L1 S PCO L1500 | - | - |
| 911401549981 | WT198X LED20S/840 WIA L600 | - | - |
| 911401571191 | WT198X LED27S/840 L1 S L1200 | - | - |
| 911401571291 | WT198X LED40S/840 L1 S L1200 | - | - |
| 911401571691 | WT198X LED27S/865 L1 S L1200 | - | - |
| 911401571791 | WT198X LED40S/865 L1 S L1200 | - | - |
| 911401572191 | WT198X LED26S/840 L1 S PCO L1200 | - | - |
| 911401572291 | WT198X LED38S/840 L1 S PCO L1200 | - | - |
| 911401572691 | WT198X LED26S/865 L1 S PCO L1200 | - | - |
| 911401572791 | WT198X LED38S/865 L1 S PCO L1200 | - | - |
| 911401550281 | WT198X LED60S/840 WIA L1500 | - | - |
| 911401550381 | WT198X LED82S/840 WIA L1500 | - | - |
| 911401552261 | WT198C LED40S/840 PSU L1200 CL | Not applicable | - |
| 911401552361 | WT198C LED60S/840 PSU L1500 CL | Not applicable | - |
| 911401552461 | WT198C LED19S/840 PSU L600 CL | Not applicable | - |
| 911401562761 | WT198C LED27S/840 PSD L1200 | Not applicable | Not applicable |
| 911401562861 | WT198C LED40S/840 PSD L1200 | Not applicable | Not applicable |
| 911401562961 | WT198C LED60S/840 PSD L1500 | Not applicable | Not applicable |
| 911401563061 | WT198C LED80S/840 PSD L1500 | Not applicable | Not applicable |
| 911401825580 | WT198C LED19S/840 PSU L600 | Not applicable | - |
| 911401825680 | WT198C LED27S/840 PSU L1200 | Not applicable | - |
| 911401825780 | WT198C LED40S/840 PSU L1200 | Not applicable | - |
| 911401825880 | WT198C LED60S/840 PSU L1500 | Not applicable | - |
| 911401825980 | WT198C LED80S/840 PSU L1500 | Not applicable | - |

GreenPerform Waterproof G3

| Order Code | Full Product Name | Maximum dim level | Suitable for random switching |
|--------------|---------------------------------|-------------------|-------------------------------|
| 911401826080 | WT198C LED18S/840 PSU PCO L600 | Not applicable | - |
| 911401826180 | WT198C LED25S/840 PSU PCO L1200 | Not applicable | - |
| 911401826380 | WT198C LED37S/840 PSU PCO L1200 | Not applicable | - |
| 911401826480 | WT198C LED57S/840 PSU PCO L1500 | Not applicable | - |

| Order Code | Full Product Name | Maximum dim level | Suitable for random switching |
|--------------|---------------------------------|-------------------|-------------------------------|
| 911401826580 | WT198C LED75S/840 PSU PCO L1500 | Not applicable | - |
| 911401550081 | WT198X LED28S/840 WIA L1200 | - | - |
| 911401550181 | WT198X LED40S/840 WIA L1200 | - | - |

