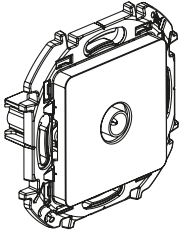
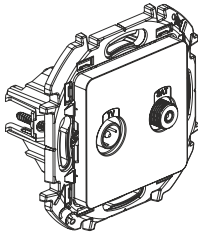
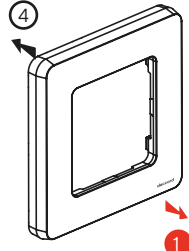
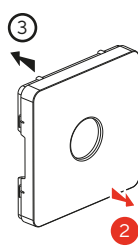
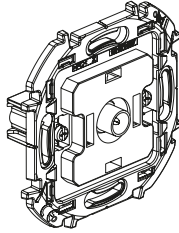


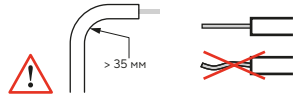
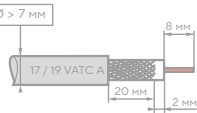
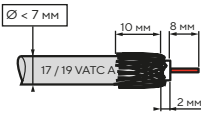
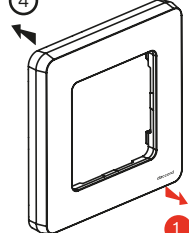
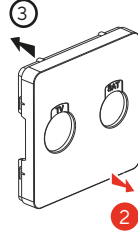
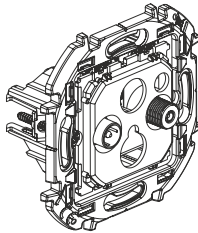
## INSPIRIA™



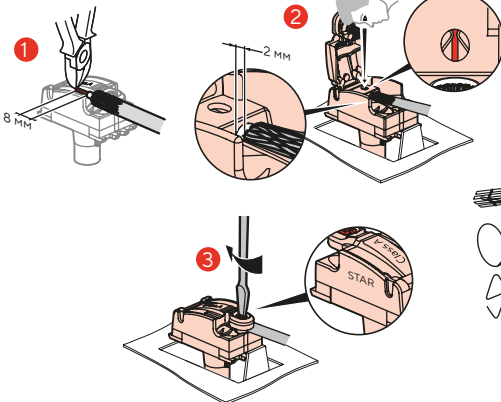
6 738 50 / 51 / 52 / 53 / 57 / 58 / 59  
6 738 60 / 61 / 62 / 63 / 67 / 68 / 69  
6 738 70 / 71 / 72 / 73 / 77 / 78 / 79



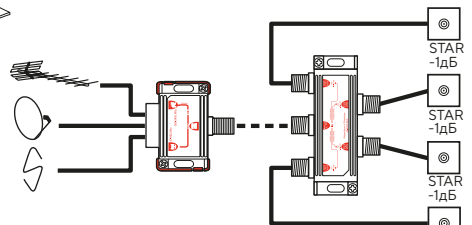
6 738 80 / 81 / 82 / 83 / 87 / 88 / 89





**A** 6 738 50 / 51 / 52 / 53 / 57 / 58 / 59

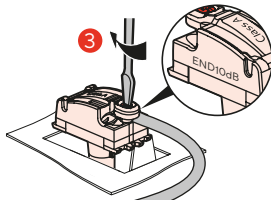
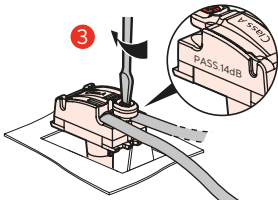
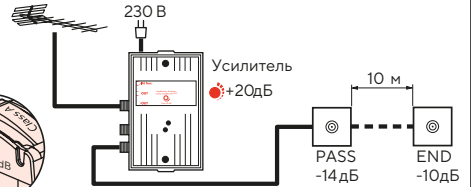
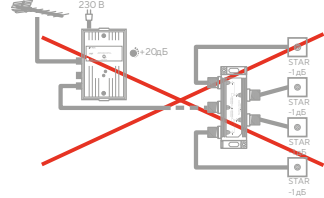
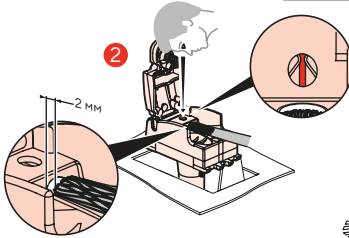
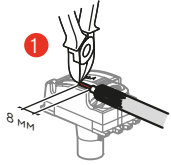


1дБ (4-2400МГц)	500 mA

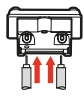
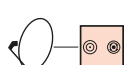
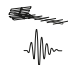




**B** 6 738 60 / 61 / 62 / 63 / 67 / 68 / 69  
6 738 70 / 71 / 72 / 73 / 77 / 78 / 79

			
6 738 60 / 61 / 62 / 63 / 67 / 68 / 69	PASS (проходная)	14 дБ (4-862МГц)	-
6 738 70 / 71 / 72 / 73 / 77 / 78 / 79	END (оконечная)	10 дБ (4-862МГц)	-



**C** 6 738 80 / 81 / 82 / 83 / 87 / 88 / 89

				
		1.5 дБ (4-2400МГц)	2 дБ (4-2400МГц)	500 мА

